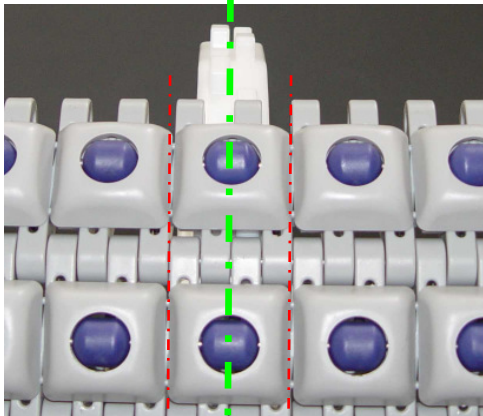


HabasitLINK®

Installation instructions for belts M5032 Roller Top 0°/45°/90°

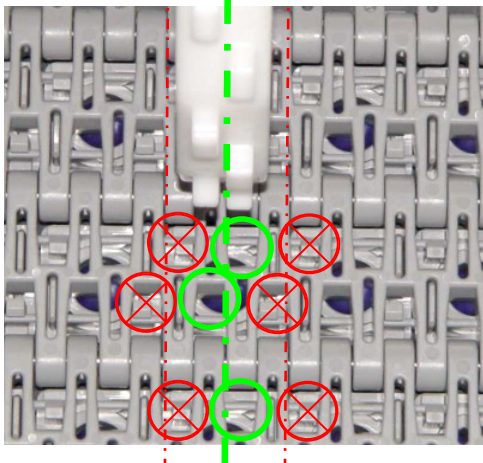
O.K.



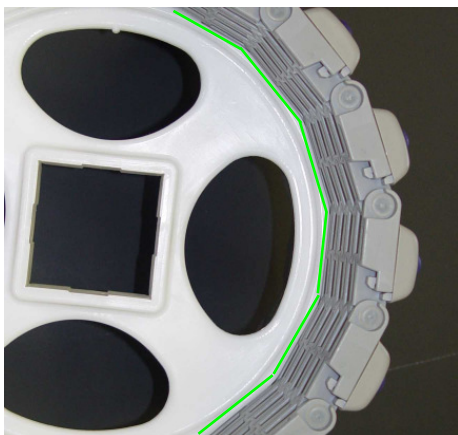
For M5032 Roller Top sprocket placement must be in center line with clip in Rollers, see green line.

From belt top view: Do not place sprockets in line at cage edge, red lines.

Minimum sprocket spacing 56mm (2.2") but must be always in centerline with clip in Roller Top.



Belt reverse view: **Do not place sprockets where clip in roller top have their fixation to belt.**



Check proper sprocket engagement, no gap shall be in-between sprocket rim and belt reverse side, see green lines.

Product liability, application considerations

If the proper selection and application of Habasit products are not recommended by an authorized Habasit sales specialist, the selection and application of Habasit products, including the related area of product safety, are the responsibility of the customer. All indications / information are recommendations and believed to be reliable, but no representations, guarantees, or warranties of any kind are made as to their accuracy or suitability for particular applications. The data provided herein are based on laboratory work with small-scale test equipment, running at standard conditions, and do not necessarily match product performance in industrial use. New knowledge and experiences can lead to modifications and changes within a short time without prior notice.

BECAUSE CONDITIONS OF USE ARE OUTSIDE OF HABASIT'S AND ITS AFFILIATED COMPANIES' CONTROL, WE CANNOT ASSUME ANY LIABILITY CONCERNING THE SUITABILITY AND PROCESS ABILITY OF THE PRODUCTS MENTIONED HEREIN. THIS ALSO APPLIES TO PROCESS RESULTS / OUTPUT / MANUFACTURING GOODS AS WELL AS TO POSSIBLE DEFECTS, DAMAGES, CONSEQUENTIAL DAMAGES, AND FURTHER-REACHING CONSEQUENCES.

